



Fraser Street, London, W4
Guide Price £1,500,000

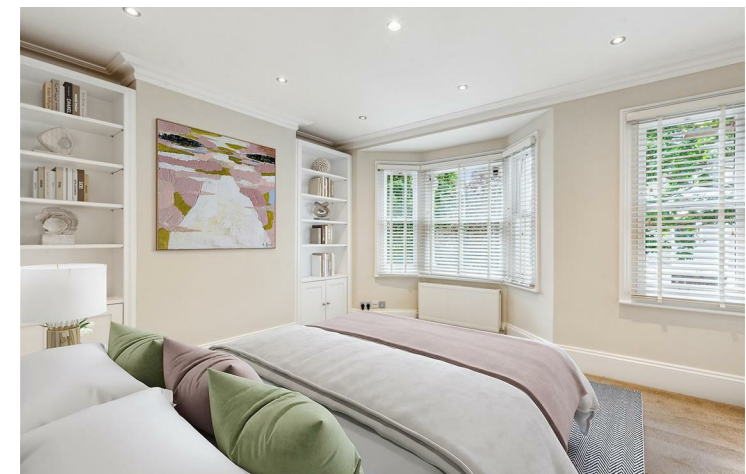
WHITMAN & CO.

SALES · LETTINGS · COMMERCIAL



Nestled in the highly sought-after Glebe Estate, this stunning period terraced house on Fraser Street, W4, offers a perfect blend of period charm and modern living. Spanning an impressive 1,657 square feet, this fully extended Victorian family home boasts an elegant double reception room, ideal for entertaining, four generously sized double bedrooms, providing ample space for family or guests, and two well-appointed bathrooms. The kitchen/breakfast room, which overlooks the garden, is an impressive space with a large dining/living area, kitchen island and extensive cabinetry and range of appliances. The beautifully landscaped garden is one of the larger gardens on the estate.

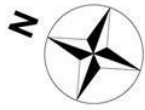
Ideally situated moments from Chiswick High Road, Turnham Green Terrace, and Devonshire Road with its cafes, bars, boutiques, shops, and restaurants (including the Michelin-starred La Trompette). Local transport links include Turnham Green tube station, numerous local bus routes and vehicular access via A4/M4 to central London, Heathrow and the West. No onward chain.



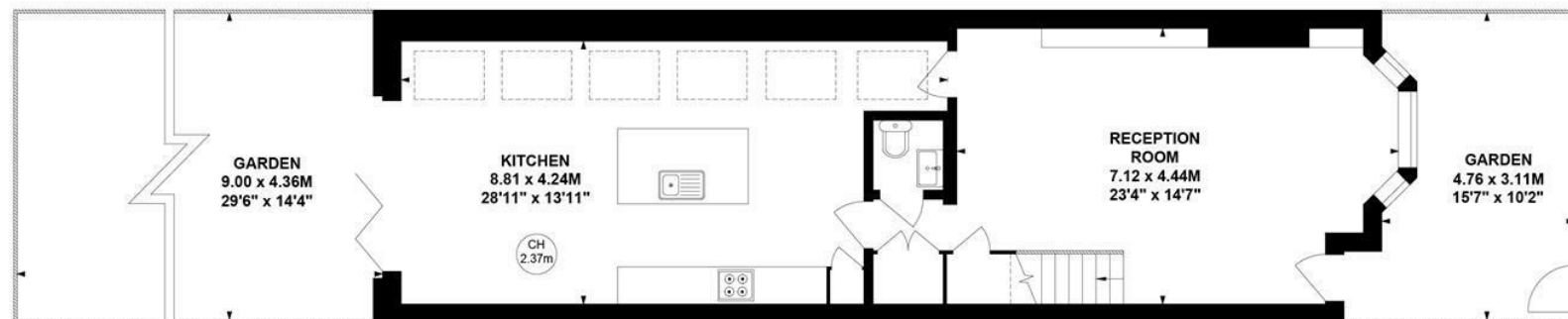
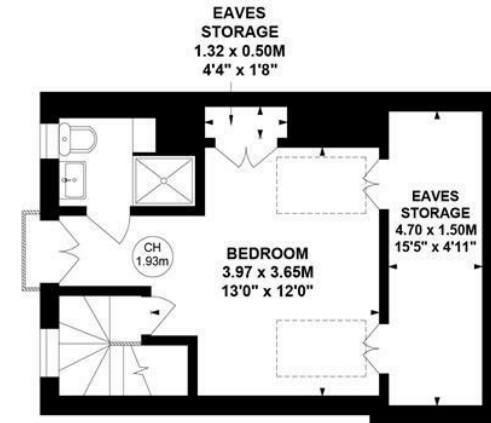
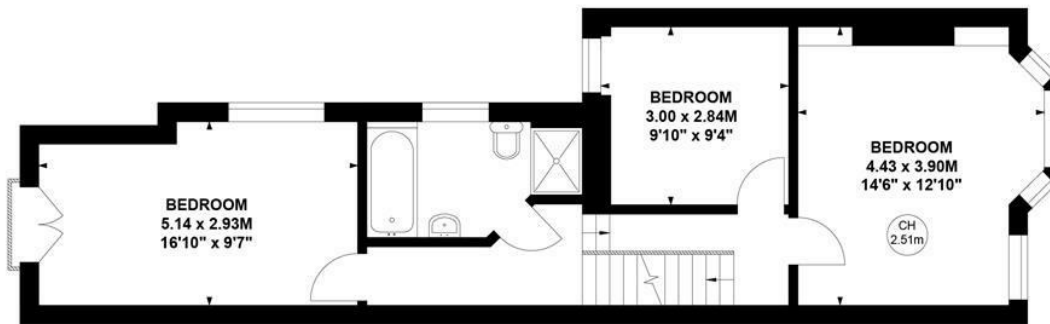
Fraser Street, W4

Approximate gross internal area
153.96 sq m / 1657 sq ft
 (Including Eaves Storage)

Eaves Storage
 7.70 sq m / 83 sq ft



Key :
 CH - Ceiling Height



Not to scale, for guidance only and must not be relied upon as a statement of fact.
 All measurements and areas are approximate only

- Fully extended Victorian family home
- 23'4x14'7 Double reception room
- Sought after Glebe Estate location

- Four double beds/two baths
- 28'11 Kitchen/breakfast room
- No onward chain

Tenure - Freehold
 Local Authority - Hounslow
 Council Tax - Band F

